

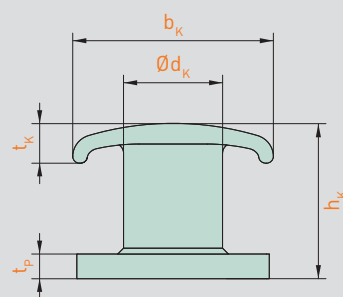
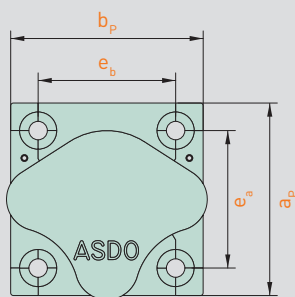
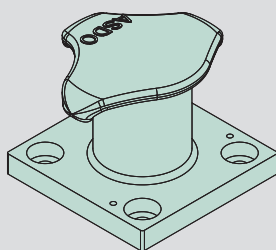
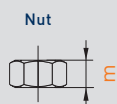
# ASDO ROTTERDAM – HBR 600 - 1750 & RDM 300 - 2500

Bollardhead HbR		HbR 600	HbR 800	HbR 1000	HbR 1250	HbR 1500	HbR 1750
Mooring line force*	[kN]	600	800	1000	1250	1500	1750
$a_p$	[mm]	750	750	750	750	750	750
$b_p$	[mm]	750	750	750	750	750	750
$h_k$	[mm]	455	455	455	455	455	455
$b_k$	[mm]	740	740	740	740	740	740
$t_k$	[mm]	120	120	120	120	120	120
$\varnothing d_k$	[mm]	350	350	350	350	350	350
$t_p$	[mm]	70	90	90	100	100	100
$e_a$	[mm]	580	565	565	550	550	550
$e_b$	[mm]	580	565	565	550	550	550
Castmaterial:		G20Mn5+QT					
Anchorage - HbR		HbR 600	HbR 800	HbR 1000	HbR 1250	HbR 1500	HbR 1750
$N_6 / \varnothing_6$	[mm]	M48	M56	M56	M64	M72	M76
m	[mm]	38	45	45	51	58	61
$h_T$	[mm]	620	690	690	760	805	890
$h_6$	[mm]	80	80	80	90	100	100
$\varnothing_T$	[mm]	145	170	170	195	215	230
Steelgrade:		ASDO-500					

\*Direction of mooring line pull as EAU 2012 + 60° horiz. & vert.

## Anchorage

### Type HbR



Bollardhead- RDM		RDM 300	RDM 600	RDM 800	RDM 1000	RDM 1250	RDM 1500	RDM 1750	RDM 2000	RDM 2500
Mooring line force*	[kN]	300	600	800	1000	1250	1500	1750	2000	2500
$a_p$	[mm]	410	480	600	650	700	700	750	800	850
$b_p$	[mm]	410	480	600	650	700	700	750	800	850
$h_k$	[mm]	380	390	525	535	545	565	575	575	575
$b_k$	[mm]	400	470	630	680	680	730	730	730	730
$t_k$	[mm]	80	80	100	120	135	145	145	145	145
$\varnothing d_k$	[mm]	200	270	340	350	360	380	400	440	460
$t_p$	[mm]	50	60	70	70	80	90	90	100	110
$e_a$	[mm]	280	350	450	450	500	500	550	600	600
$e_b$	[mm]	280	350	450	450	500	500	550	600	600
Castmaterial:		G20Mn5+QT								
Anchorage - RDM		RDM 300	RDM 600	RDM 800	RDM 1000	RDM 1250	RDM 1500	RDM 1750	RDM 2000	RDM 2500
$N_6 / \varnothing_6$	[mm]	M36	M42	M48	M56	M64	M72	M76	M80	M85
m	[mm]	29	34	38	45	51	58	61	64	68
$h_T$	[mm]	520	580	620	690	760	805	890	980	1000
$h_6$	[mm]	60	70	80	80	90	100	100	110	120
$\varnothing_T$	[mm]	110	130	145	170	195	215	230	245	260
Steelgrade:		ASDO-500								

\*Direction of mooring line pull as EAU 2012 + 60° horiz. & vert.

## Anchorage

### Type RDM

