

ASDO

HEAVY LIFTING SHACKLES

WLL 35 t to 1500 t
All type approved according to
DNV-ST-0377 and DNV-ST-0378



Since 1920

over **100**
years steel tradition

**ANKER
SCHROEDER**
ASDO heavy lifting & mooring



HEAVY LIFTING SHACKLES

Anker Schroeder has been forging steel for over a century from its base in Dortmund Germany. Large shackles have been manufactured here for over 60 years in a variety of pin colours and supplied to global players in the market. Heavy lifting shackles are now offered direct to the market under the ASDO brand with 'orange & blue pin' for both industrial and offshore applications.

The ASDO standard range of shackles includes Heavy Duty (HD), Heavy Polar (HP) and Heavy Super (HS) ranging from 35 t to 1500 t WLL (see page 4 & 5 for more detail).

The flexibility of the ASDO production process and reliable access to high quality material allows for cost-effective manufacturing of custom-made shackles to suit your application. Please contact our sales team for more information.

- No limitations on batch size of customised shackles: ranging from a few to many hundred pieces within the shortest time frame.
- ASDO capabilities allow for small increments of sizes and tolerances, best material utilisation and minimal waste.

Production process



ASDO shackle material is sourced from certified European steel mills



ASDO stocks over 4,000 tonnes of steel



Zero-waste forging process: eyes are upset forged



Zero-waste forging process: 'dog bones'

**PRODUCTION
PROCESS**



Shackles are available from stock



Zero-waste forging process: 'dog bones' are formed to bow shape



Bow forging dimensions are controlled and adjusted



Shackles and pins CNC machined in-house



Shackles are proof load tested (witnessed by Classification society on request)

ASDO SHACKLES - 35 TO 1500 TONNES WLL



The safety factor of ASDO shackles is fully assessed by in-house FEA and confirmed by physical testing during DNV Type approval process. ASDO Heavy Lifting Shackles generally comply or exceed design and testing requirements of ASME B30.26-1 and Federal Specification RR-C-271. The sizes 2" up to 4" are fully compliant to Federal Specification RR-C-271.

ASDO Heavy Polar (HP) Shackles are designed for use in low temperature conditions. ASDO Heavy Super (HS) Shackles are made of higher strength material and are well suited for use where higher loads are required with reduced dimensions and weight.

All ASDO Shackles used for lifting applications are always marked with hard stamped batch code and serial ID as well as hot embossed markings WLL, ASDO symbol, steel grade and CE mark. Additional markings are applied as required by the additional certification scope.

Key features

- Quenched and tempered steel Grade 8
- Type approval by DNV (ST-0378, ST-0377)
- Frame size & unique ID number on each bow
- Anti-rotation pin
- MBL Design factor 5 x WLL
- Each shackle is supplied with
 - » 100% Proof load test to 2 x WLL
 - » 100% UT of raw material
 - » 3.1 Material Certificate acc.to EN 10204
 - » EU Declaration of Conformity CE
 - » Painted finish
- By request the following can be supplied
 - » DNV product certificate for loose gear (CG3)
 - » Witnessed Proof Load test Certificate
 - » 100% MPI and UT test Certificate
 - » Certificate of conformity UKCA
 - » Special dimension and tolerances

Product branding



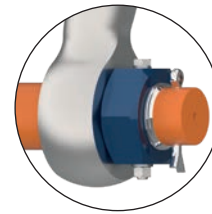
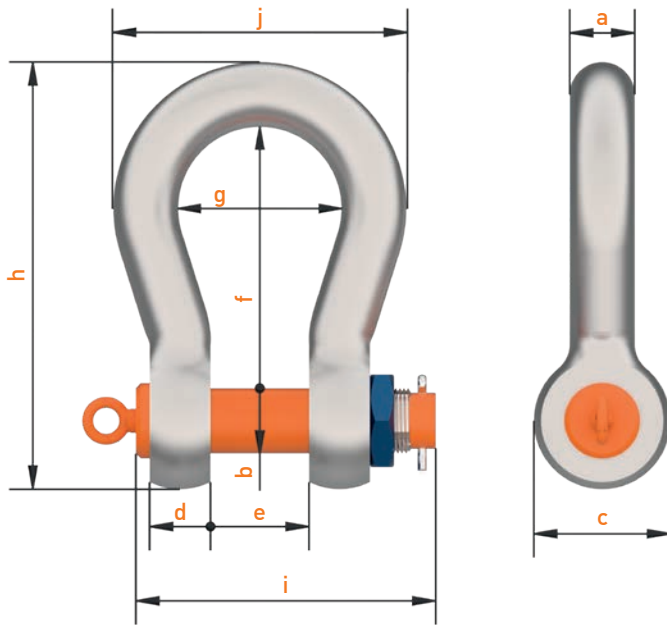
New type approved sizes are now on stock!



Type Designation	HD Heavy Duty	HP Heavy Polar	HS Heavy Super
Working Load Limit Range (WLL)	35 t - 1500 t	35 t - 600 t	55 t - 175 t
Charpy value at Temperature	27 J / -20 °C	42 J / -40 °C	27 J / -20 °C
Operating Temperature range	-20 °C / +200 °C	-60 °C / +200 °C	-20 °C / +200 °C

*Heavy Duty shackles HD 35 t and HD 55 t are polar rated for operation at down to -60 °C and have HP colour coding

Dimensions and capacity



Standard ASDO range is also available with lock nut at request (LN)

Dimensions and capacity

Type	Working Load Limit WLL	Frame (bow) Size	bow diameter a	pin diameter b +/- 0,5	inside width g	jaw gap e (min./max.)	inside height f	eye diameter c (min./max.)	eye thickness d	pin length i	total height h (max.)	total width j (max.)	aprox. weight
HS Heavy Super	55 t	2	52	57	139	83,5 / 91	198	115 / 123	52	284	360	251	24 kg
	85 t	2 ¾	66	70	180	105 / 113	256	144 / 152	66	347	452	320	45 kg
	120 t	3	85	83	190	127 / 133	330	162 / 177	80	398	574	376	78 kg
	150 t	3 ½	95	95	238	144 / 150	380	200 / 215	89	438	659	444	115 kg
	175 t	4	105	108	275	165 / 173	385	230 / 245	100	508	696	503	162 kg
HD Heavy Duty HP Heavy Polar	35 t	2	52	57	139	83,5 / 91	198	115 / 123	52	284	360	251	24 kg
	55 t	2 ¾	66	70	180	105 / 113	256	144 / 152	66	347	452	320	45 kg
	85 t	3	85	83	190	127 / 133	330	162 / 177	80	398	574	376	78 kg
	120 t	3 ½	95	95	238	144 / 150	380	200 / 215	89	438	659	444	115 kg
	150 t	4	105	108	275	165 / 173	385	230 / 245	100	508	696	503	162 kg
	200 t	4 ¾	120	125	280	180 / 188	450	270 / 288	110	550	807	540	240 kg
	250 t	5	130	140	305	205 / 215	520	290 / 308	115	590	914	585	306 kg
	300 t	6	140	150	305	205 / 215	530	315 / 335	120	605	952	605	368 kg
	400 t	7	160	175	325	230 / 240	575	365 / 387	160	715	1057	667	602 kg
	500 t	7 ¼	180	185	350	250 / 262	650	385 / 410	160	740	1168	734	735 kg
	600 t	8	200	205	375	275 / 288	650	430 / 458	185	828	1222	800	969 kg
	700 t	8 ¼	210	215	400	300 / 315	650	440 / 468	200	885	1242	847	1091 kg
	800 t	8 ½	210	220	400	300 / 315	650	450 / 478	200	890	1247	847	1106 kg
	1000 t	9 ½	240	240	420	340 / 357	700	500 / 530	210	955	1366	928	1476 kg
	1250 t	10	260	270	450	360 / 378	750	570 / 600	225	1010	1486	1000	1955 kg
1500 t	11	280	290	450	360 / 378	800	610 / 640	225	1010	1586	1040	2327 kg	

PL = 2 x WLL exceeding the class requirements. All dimensions in mm

ASDO IS AN APPROVED MANUFACTURER

Anker Schroeder is an approved manufacturer of forgings and forged accessories by ABS, DNV, Bureau Veritas, and Lloyd's Register for industrial, lifting and mooring applications. The Quality management system is certified by Lloyd's Register.

ASDO shackles are forged from high quality alloy steels and quenched and tempered according to approved heat treatment procedures complying with the latest requirements set by the Classification Societies. Each batch is tested for mechanical properties by an accredited partner. The production history of each shackle is traceable to heat treatment batch, proof load test and inspection certificate. ASDO shackles meet all relevant requirements of the Machinery Directive 2006/42/EC and the UK Supply of Machinery (Safety) Regulations 2008.

Where requested the proof load test and final inspection is performed under the survey of a classification society, such as ABS, BV, DNV, LROS or any other officially certified inspection body at additional cost. Additional certification must be requested at time of order.

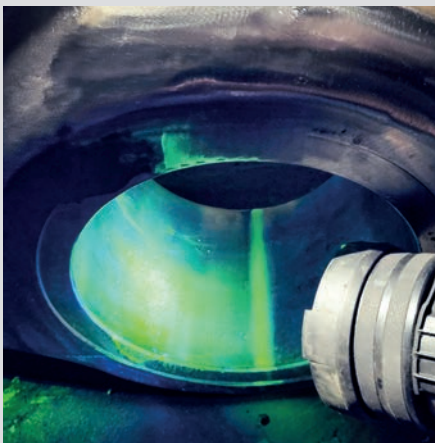
Quality Control



NDT - ultrasonic testing



Proof testing (2 x WLL) on in-house 3000 t test rig using quick release system



NDT - Magnetic Particle Inspection



Mechanical testing is performed for every production batch and ensures individual traceability to every shackle.



Shackle unique ID / traceability marking

This publication provides information and technical details currently used by Anker Schroeder in the manufacture of its products. Although we have taken great care in the preparation of the data within this publication, we cannot assume responsibility for the completeness and accuracy of all the details given. Each customer should satisfy themselves of the product suitability for their requirements. The publication of this data does not imply a contractual offer.

In line with Anker Schroeder's policy of continuous improvement the company reserves the right to change or amend details. Please contact our technical department for further information or to ensure these details are current.

ASDO has the experience, passion and dedicated team to make a product to meet your specific project goals.



We at Anker Schroeder design and manufacture shackles of special size and shape to suit your application: heavy lifting, towing or mooring



Reimund Schroeder, forge master for more than 45 years

OTHER PRODUCTS



ASDO Structural
Architectural structural bars to EN1993 for use in structures
Diameter M16 to M160



ASDO Marine
Upset forged tie bars to EN1993-5 for use in marine retaining structures
Diameter M64 to M170

Seal of approval





Anker Schroeder ASDO GmbH
Hannöversche Straße 48
44143 Dortmund

Tel +49 231 51701-0
Fax +49 231 51701-56
shackles@ASDO.de
www.ASDO.com



February 2026, current issue at: www.ASDO.com